

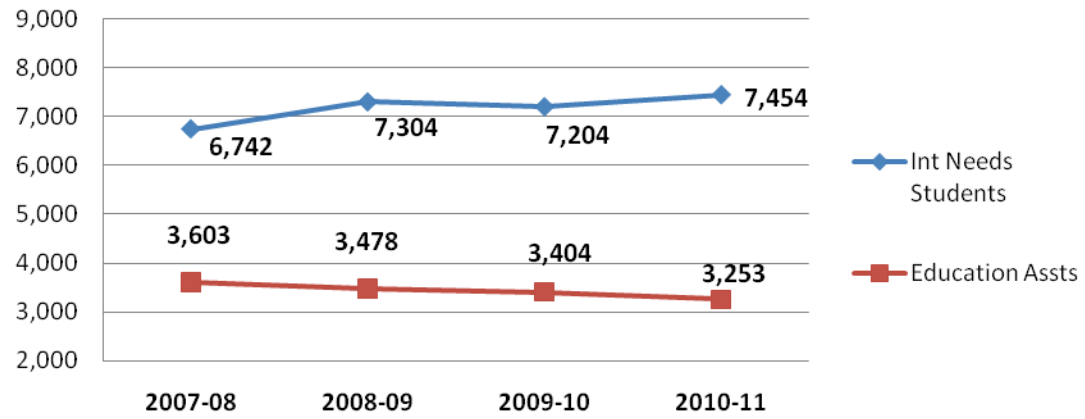
SUMMARY

SASKATCHEWAN SCHOOLS ENROLLMENT AND STAFFING

2010-11 SCHOOL YEAR COMPARED TO 2007

- There were 350 fewer full-time equivalent Educational Assistants (EAs) in all Saskatchewan schools in the 2010-11 school year, compared to the 2007-08 school year. Because very few Educational Assistants work full-time, this actually translates into a loss the union estimates to be several hundred Educational Assistants. This represents a 9.7 per cent reduction.
- There were 5,676 additional students enrolled in Saskatchewan's schools in the 2010-2011 school year, compared to the 2007-08 school year.
- There was an increase of 764 intensive needs students in Saskatchewan's schools in 2010-11, compared to 2007-2008 (a 10 per cent increase).
- There were 97 fewer total staff across all school divisions in 2010-11, compared to 2007-08.
- Since 2007, 80 ancillary staff have been added including Occupational Therapists and Psychologists.
- The divisions with the greatest number of EA positions cut since 2007 are:
 - Regina Public School Division (61 FTE)
 - Lloydminster Public School Division (57 FTE)
 - Prairie Spirit School Division (47 FTE)
 - Chinook School Division (43 FTE)
 - Saskatoon Public School Division (34 FTE)
- The divisions with the greatest cuts to EAs by percentage (per cent change compared with 2007)
 - Lloydminster Roman Catholic Separate School Division: 67.7% reduction
 - Lloydminster Public School Division: 60.9% reduction
 - Regina Public School Division: 21.6% reduction
 - Chinook School Division: 19% reduction

Chart 1
Change in number of Intensive needs students and EAs
in Saskatchewan schools, 2007-08 to 2010-11

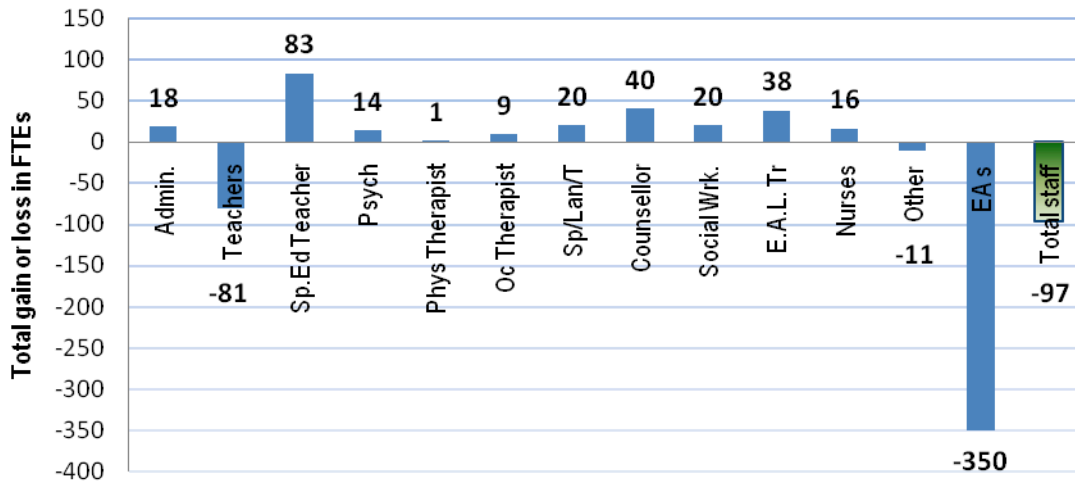


CUPE Research

Note: revised September 7, 2011 to correct intensive needs student numbers

CS/tlg.cope491

Chart 2
Change in Provincial Staffing (FTE) Levels,
2007-08 to 2010-11



Changes to EAs (FTEs) by School Division, 2007-08 to 2010-11

School Division	2007	2008	2009	2010	FTE change	FTE change	% change	% change
					2009-2010	2007-2010	2007-2010	2009-10
Sun West	154	140.8	140.9	148.8	7.9	-5.2	-3.4%	5.6%
St. Paul's R.C.	299	310	306	305	-1	6	2.0%	-0.3%
Regina	283.5	273	249	222.4	-26.6	-61.1	-21.6%	-10.7%
Saskatchewan Rivers	167.8	174.5	174.5	180	5.5	12.2	7.3%	3.2%
Saskatoon	361.55	335.5	296.43	327.22	30.79	-34.33	-9.5%	10.4%
South East Cornerstone	171.26	170.5	207.56	186.58	-20.98	15.32	8.9%	-10.1%
North West	114.52	127.18	124.47	93.68	-30.79	-20.84	-18.2%	-24.7%
Prairie South	145.95	155.56	135.16	137.88	2.72	-8.07	-5.5%	2.0%
Christ the Teacher R.C.	48.6	48.6	38.5	34	-4.5	-14.6	-30.0%	-11.7%
Chinook	226.07	225.59	200.31	183.06	-17.25	-43.01	-19.0%	-8.6%
Good Spirit	142	149.53	144.61	131.7	-12.91	-10.3	-7.3%	-8.9%
Englefeld Protestant	3.8	2	2.45	2.45	0	-1.35	-35.5%	0.0%
Prince Albert R.C.	38.5	35.5	36	37	1	-1.5	-3.9%	2.8%
Regina R.C.	94.65	94.65	91.8	91.7	-0.1	-2.95	-3.1%	-0.1%
Northern Lights	108	91.25	94	93.75	-0.25	-14.25	-13.2%	-0.3%
North East	111.5	109.12	101.51	90	-11.51	-21.5	-19.3%	-11.3%
Lloydminster R.C.	44.9	14.4	15.55	14.51	-1.04	-30.39	-67.7%	-6.7%
Lloydminster	93.3	34	39.91	36.48	-3.43	-56.82	-60.9%	-8.6%
Living Sky	178	170.53	168.07	177.22	9.15	-0.78	-0.4%	5.4%
Light of Christ R.C.	38	41.6	39.5	36	-3.5	-2	-5.3%	-8.9%
Il a La Crosse	7	7	8	8	0	1	14.3%	0.0%
Horizon	162.67	163.7	156.5	162.371	5.871	-0.299	-0.2%	3.8%
Creighton	13	14	13.5	14	0.5	1	7.7%	3.7%
Conseil Des Ecoles Fransaskoises	14.56	17.62	25	24.41	-0.59	9.85	67.7%	-2.4%
Prairie Spirit	341.26	350.13	357.01	294.17	-62.84	-47.09	-13.8%	-17.6%
Prairie Valley	162	152.33	170.5	151.2	-19.3	-10.8	-6.7%	-11.3%
Holy Trinity R.C.	49.7	38.49	41	42.33	1.33	-7.37	-14.8%	3.2%
Holy Family R.C.	27.8	31.35	26.55	26.65	0.1	-1.15	-4.1%	0.4%
Provincial Total FOIR	3603	3478	3404	3253	-151	-350	-9.7%	-4.4%

	2007-08	2008-09	2009-10	2010-11
Int Needs Students	7,736	8,239	8,202	8,500
Education Assts	3,603	3,478	3,404	3,253

CUPE Research

Source: Saskatchewan Ministry of Education Staffing Profiles 2007-08 to 2010-11.

August 23, 2011